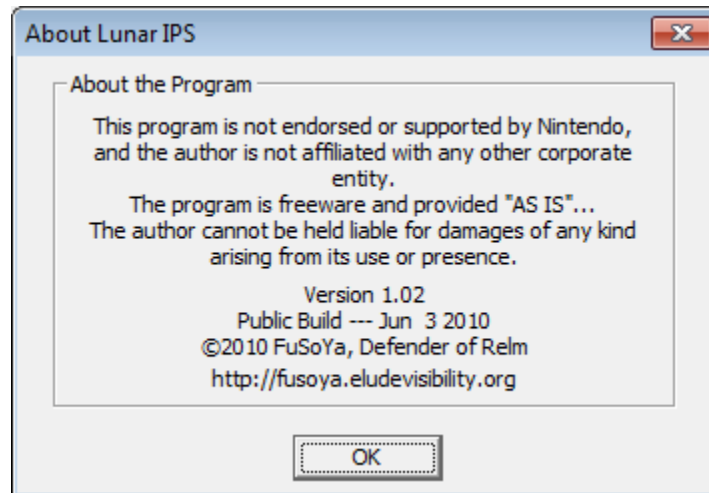


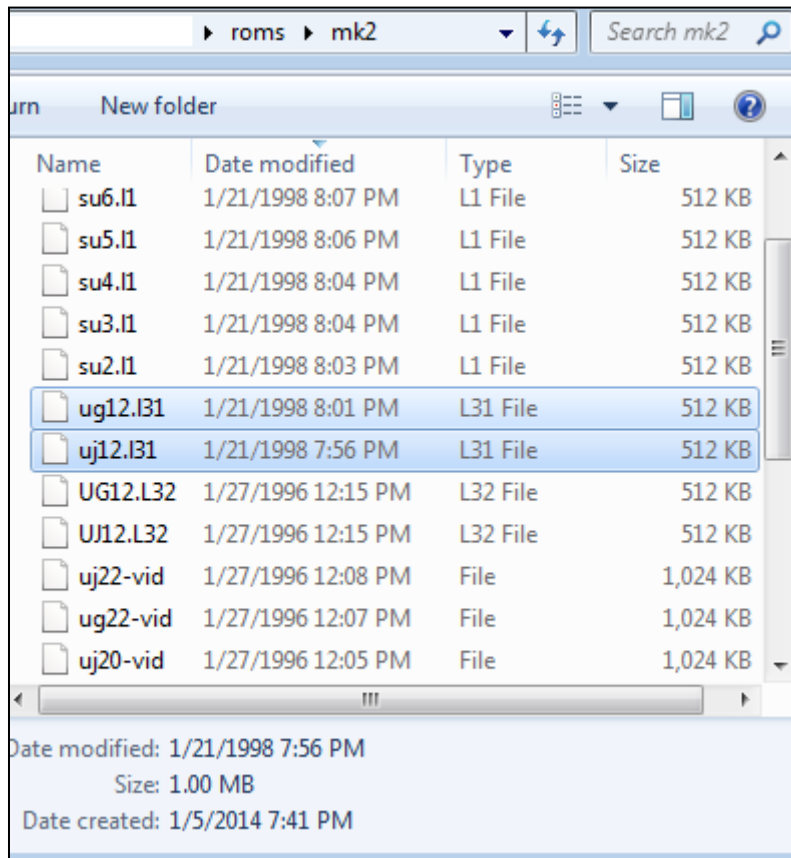
Using Lunar IPS to patch the Revision 3.1 MKII ROM to UMK2:TE

This patch was created using Lunar IPS (LIPS) version 1.02



These instructions can be used for any patch just substitute the patch and ROMs with what you see in this document.

1. Ensure you have the original ROMs for Revision 3.1
(and the right to possess them)
2. The ROMs you are patching are:
 - a. UG12.L31 and
 - b. UJ12.L31



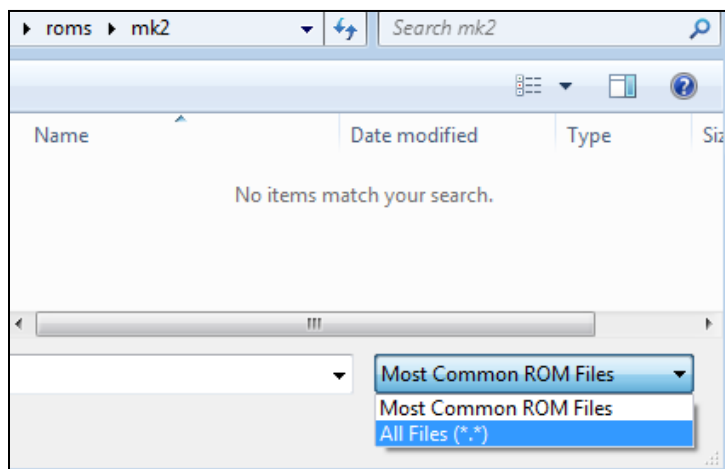
3. Download the patch files:
 - a. UG12_Revision#_TimeCreated.IPS and
 - b. UJ12_Revision#_TimeCreated.IPS

Name	Date modified	Type
♥ ug12_5-0-050_1222.ips	4/7/2014 12:22 PM	Lunar IPS File
♥ uj12_5-0-050_1222.ips	4/7/2014 12:23 PM	Lunar IPS File

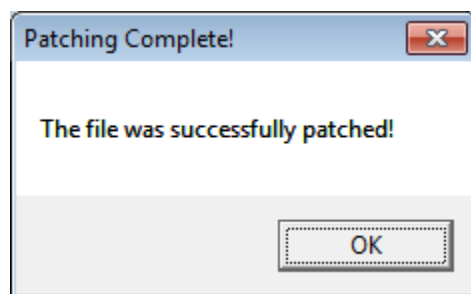
4. Open Lunar IPS

You will do the following for each ROM listed in step 2

5. Click **Apply IPS Patch**
6. On the **Select IPS File to Use** window, navigate to where you saved the IPS patch files.
7. Select the first Patch File and click **Open**
8. On the **Select File to Patch** window, navigate to where your original ROMs are located.
9. Select the matching ROM and click **Open**
(If you selected the UG12 Patch, use it on the UG12.L31 ROM)
10. If the ROM does not show up, click on **Most Common ROM Files** and select **All Files *.*** from the dropdown list.



11. You should see a window saying **“The file was successfully patched!”**



12. Repeat steps 5-11 for the second ROM
(if you did the UG12 Patch first, do the UJ12 Patch second)